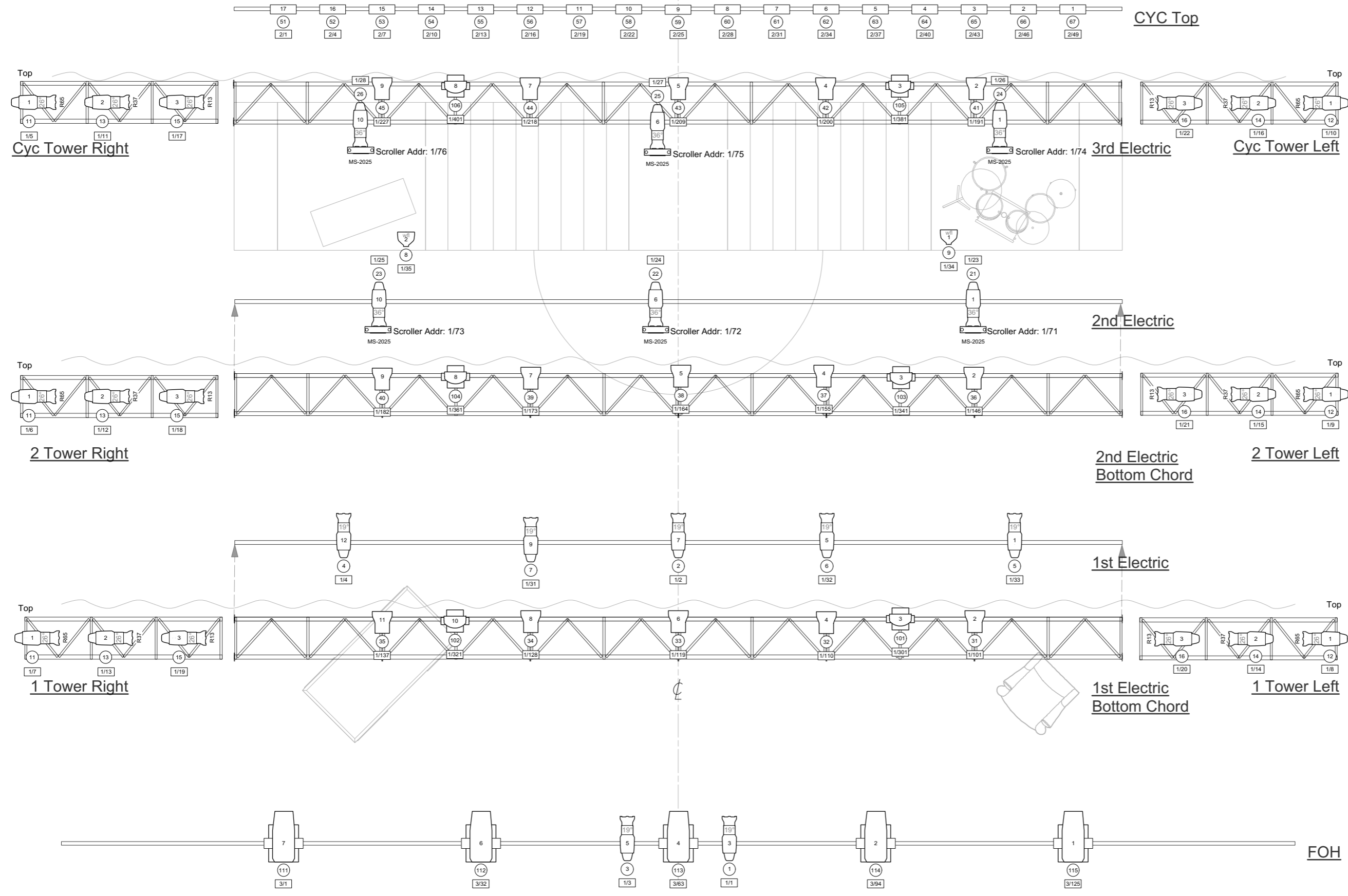


ETC Education Center  
[www.etcconnect.com/support](http://www.etcconnect.com/support)



**Key:**

	S4 19 Degree		Color Scroller
	S4 26 Degree		Robin 300 LED Wash (Mode 3)
	S4 36 Degree		VL3500 Spot (VL3500 Spot Mode)
	D60 Lustr+ (Direct Strobe)		
	S4 PAR WFL		
	ColorBlast 12		

**Legend:**

- xx-## ← Gobo
- ## ← Unit Number
- # ← Channel
- ### ← Universe / Address

Performance:  
**Music the Musical**

Venue:  
**The Performing Arts Center  
 for the Performing Arts**

Final: 11/14/14	Level
Revision: <b>A</b>	<b>1</b> of 3