

# ETC<sup>®</sup> Service Note

## Congo™ jr Hard Drive Replacement



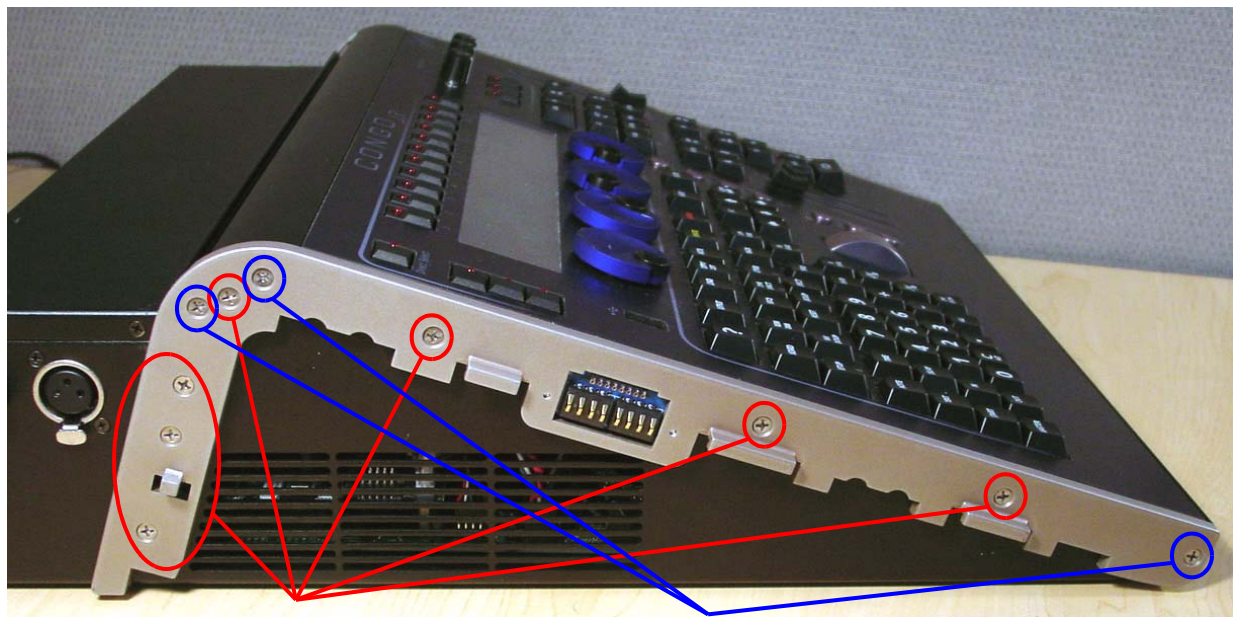
### Tools Required:

- #2 Phillips Screwdriver
- #1 Phillips Screwdriver
- Side Cutter
- (3) 4" Replacement zip ties

### Procedure:

- Step 1: Remove the protective side panels from the Congo jr Console.
- Step 2: Remove the 7 screws indicated in **Red** below.
- Step 3: Loosen the 3 screws indicated in **Blue** below.

**NOTE: DO NOT remove the 3 screws.**



Remove these screws

Loosen these screws  
2 full turns



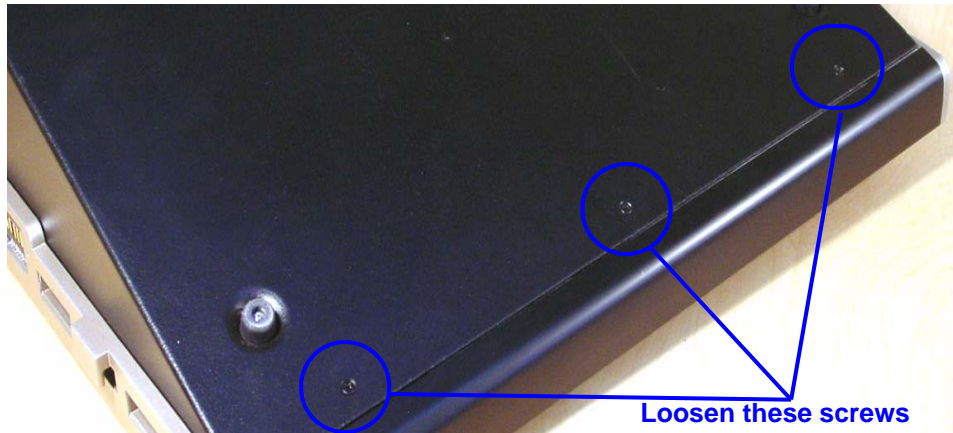
Corporate Headquarters ■ 3031 Pleasant View Road, P.O. Box 620979, Middleton, Wisconsin 53562-0979 USA ■ Tel +608 831 4116 ■ Fax +608 836 1736  
London, UK ■ Unit 26-28, Victoria Industrial Estate, Victoria Road, London W3 6UU, UK ■ Tel +44 (0)20 8896 1000 ■ Fax +44 (0)20 8896 2000  
Rome, IT ■ Via Ennio Quirino Visconti, 11, 00193 Rome, Italy ■ Tel +39 (06) 32 111 683 ■ Fax +39 (06) 32 656 990  
Holzkirchen, DE ■ Ohmstrasse 3, 83607 Holzkirchen, Germany ■ Tel +49 (80 24) 47 00-0 ■ Fax +49 (80 24) 47 00-3 00  
Hong Kong ■ Room 1801, 18/F, Tower 1 Phase 1, Enterprise Square, 9 Sheung Yuet Road, Kowloon Bay, Kowloon, Hong Kong ■ Tel +852 2799 1220 ■ Fax +852 2799 9325  
Service: (Americas) [service@etcconnect.com](mailto:service@etcconnect.com) ■ (UK) [service@etc europe.com](mailto:service@etc europe.com) ■ (DE) [techserv-hoki@etcconnect.com](mailto:techserv-hoki@etcconnect.com) ■ (Asia) [service@etcasia.com](mailto:service@etcasia.com)  
Web: [www.etcconnect.com](http://www.etcconnect.com) ■ Copyright © 2006 ETC. All Rights Reserved. ■ Product information and specifications subject to change.  
Ⓢ Pending ■ Rev A ■ Released 02/2007

# ETC Service Note

## Congo™ jr Hard Drive Replacement

Step 4: Carefully flip over the console and loosen the 3 screws in blue below:

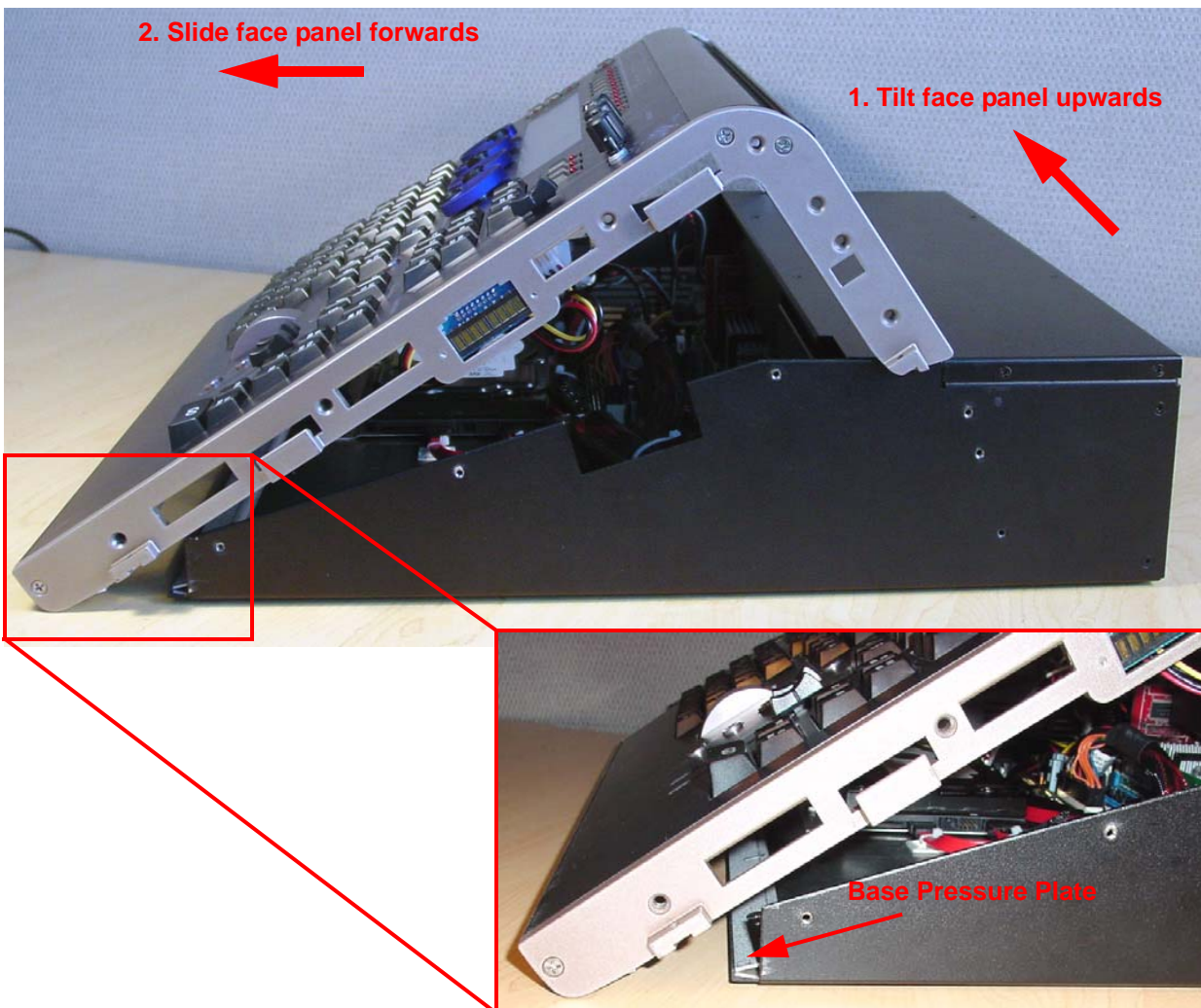
***NOTE: DO NOT remove the 3 screws.***



Step 5: Flip the console back onto the base.

Step 6: Lift the back side of the face panel upwards away from the base.

Step 7: Slide the face panel towards the front of the console. The face panel will slip under the base pressure plate.

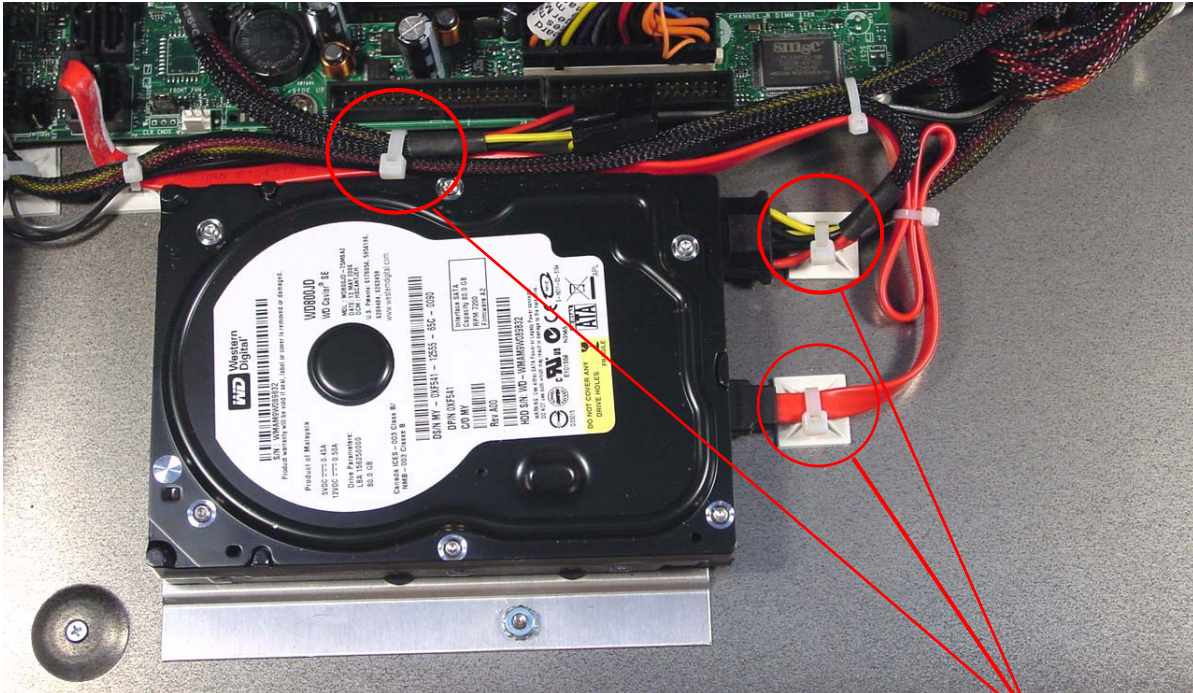


# ETC Service Note

## Congo™ jr Hard Drive Replacement

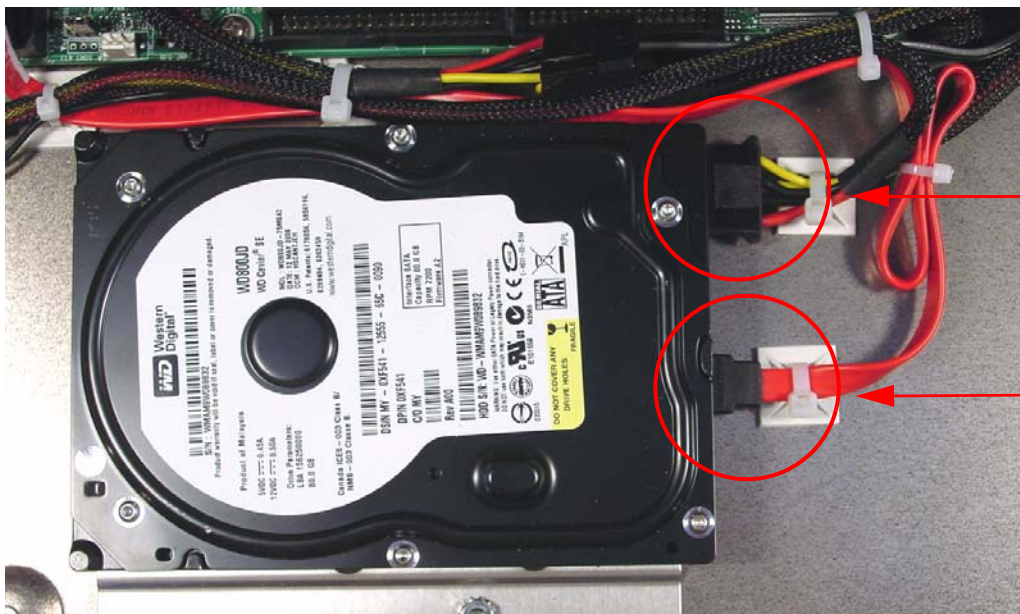
Step 8: Rest the face panel off to the left side of the base unit. (the side with the DMX connectors) There is no need to remove the face panel cables when replacing the hard drive.

Step 9: Clip all 3 zip ties holding the Power supply and SATA cables.



**Remove these zip ties**

Step 10: Disconnect the Power and SATA connectors from the hard drive.



**Power Cable**

**SATA Cable**

# ETC Service Note

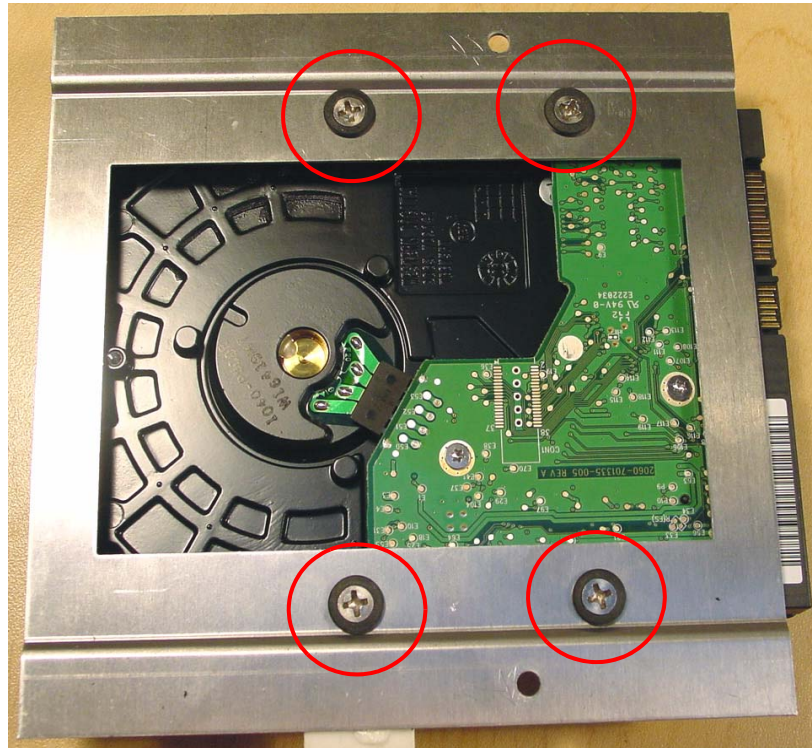
## Congo™ jr Hard Drive Replacement

Step 11: Using a 5/16" nut driver, remove both nuts from the hard drive plate.



Remove both  
5/16" nuts

Step 12: Remove all 4 Hard Drive Plate Screws.



Step 13: Swap the old Hard Drive for the new one. Replace all four screws holding it to the Hard Drive Mounting plate.

Step 14: Place the Hard Drive Plate over the screws and tighten down both 5/16" nuts.

Step 15: Re-attach the Hard Drive Power and SATA cables back into the hard drive.

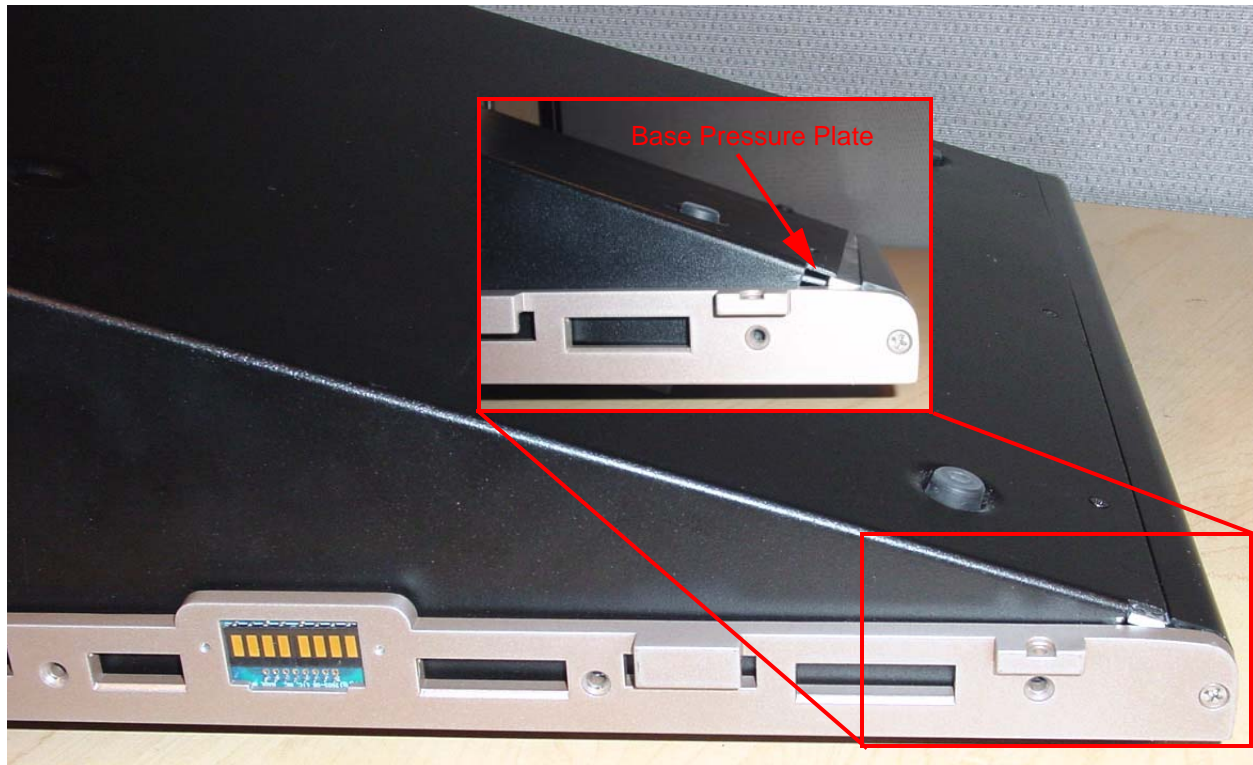
Step 16: Replace all 3 zip ties around the sticky backs.

Step 17: Trim the excess tail off the zip ties.

# ETC Service Note

## Congo™ jr Hard Drive Replacement

Step 18: Slide the face panel back under the pressure plate..



Step 19: Re-attach all 7 screws from each side of the console face panel.

Step 20: Flip the face panel over and tighten the 3 screws on the base of the console.

Step 21: Power the console up and verify correct face panel operation and LCD screen operation.

Step 22: Update console software as necessary.

# ETC Service Note

## Congo™ jr Hard Drive Replacement

---