

ETC® Release Note

SmartFade® Software



Product Line: SmartFade

Description: Version 2.0.0 Software

SmartFade Components

SmartFade embedded software	2.0.0.9.0.23
SmartFade Software Utility	1.0.0

Engineering Change Order (ECO): 500004748

Effective Date: December 4, 2008

Purpose

The purpose of this release is to introduce new features and correct issues found in previous versions of software. For any questions relating to the contents of this release or the behavior of this software, please contact ETC Technical Services at the office nearest you. A list of ETC offices is given at the bottom of this page.

Availability

This software is currently available in new shipping units and via software download from the ETC website.

Documentation

Current documentation includes the *SmartFade Two-Scene Quick Guide* and the *SmartFade v2.0 User Manual*. Please keep this release note with your user manual for descriptions of the newest features, changes and bug fixes in the SmartFade software. ETC manuals can be downloaded free of charge from ETC's website at www.etcconnect.com. They are available in portable document format (pdf), and are viewable with Adobe® Acrobat® Reader™ v6.x and later.

Compatibility

- SmartFade is compatible with all DMX512 1990 and DMX512 ANSI E1.11 compliant devices.

Key Enhancements in v2.0.0

- Added SmartSoft connectivity support
- Direct Cues in the Stack - record looks directly into stack steps without needing to also record and insert a memory
- New Channel Adjustment menu tool
- Italian language support added.
- New menu items for show file management, erasure of stack, Independents settings
- Bug fixes.

Key Enhancements in v1.7.1

- Bug fixes.

Key Enhancements in v1.7.0

- You can now move both crossfaders to zero and get a blackout. The previous behavior was to keep unchanging levels live when the crossfaders were simultaneously taken to their respective zero positions.



Corporate Headquarters ■ 3031 Pleasant View Road, P.O. Box 620979, Middleton, Wisconsin 53562-0979 USA ■ Tel +608 831 4116 ■ Fax +608 836 1736
London, UK ■ Unit 26-28, Victoria Industrial Estate, Victoria Road, London W3 6UU, UK ■ Tel +44 (0)20 8896 1000 ■ Fax +44 (0)20 8896 2000
Rome, IT ■ Via Ennio Quirino Visconti, 11, 00193 Rome, Italy ■ Tel +39 (06) 32 111 683 ■ Fax +44 (0) 20 8752 8486
Holzkirchen, DE ■ Ohmstrasse 3, 83607 Holzkirchen, Germany ■ Tel +49 (80 24) 47 00-0 ■ Fax +49 (80 24) 47 00-3 00
Hong Kong ■ Rm 1801, 18/F, Tower I Phase 1 Enterprise Square, 9 Sheung Yuet Road, Kowloon Bay, Kowloon, Hong Kong ■ Tel +852 2799 1220 ■ Fax +852 2799 9325
Service: (Americas) service@etcconnect.com ■ (UK) service@etceurope.com ■ (DE) techserv-hoki@etcconnect.com ■ (Asia) service@etcasia.com
Web: www.etcconnect.com ■ QSF 4.1.9.1 ■ Copyright © 2008 ETC. All Rights Reserved. ■ Product information and specifications subject to change.
7219M1100-2.0.0 ■ Rev A ■ Released 12/2008

ETC Release Note:

SmartFade v2.0.0 Software

- Show file formats for 1248 consoles and 1296 console share the same format. The show file format for 2496 consoles have a different format. Show files from small footprint consoles are not compatible with large footprint consoles and visa-versa.
- Bug fixes.

Software Installation

These are the instructions for updating the software in your SmartFade console. There are two ways of updating the software.

- Using the **SD** card
- Connecting with **USB** to a **PC**

Software can be downloaded from the ETC Web site: www.etcconnect.com

Please make sure to download the correct software for your console - **SmartFade** and **SmartFade** use different software.



CAUTION: *Make sure to back up any show data you want to keep to the SD card before proceeding with a software upgrade*

SD Card Update

If you are using an SD card for the very first time - make sure it is formatted correctly (FAT16), or it will not function with SmartFade.

- Step 1: Obtain the software update file **SMRTFD.SRC** from the download section of the ETC Web site: www.etcconnect.com
- Step 2: Copy the **SMRTFD.SRC** file to the root directory of the SD card. DO NOT RENAME THE FILE!
- Step 3: Start the console in test mode. This is done by holding down the **MENU** button and pressing once on **ON**.



The unit will enter self-test mode. Press **MENU** for each of the tests until the memory test has completed. At the end of the memory test the display will prompt:

Firmware Upgrade

Are you sure? [No]

- Step 4: Insert the SD card into the console.
- Step 5: Turn the encoder to select **YES** and press **MENU**. The update will start and the console will boot into the new updated software after the process is complete.



Note: *If you have accidentally initiated a software update, you can exit without making any changes by unplugging the console.*

USB Update

To update with USB you need a **PC** running the Windows operating system (Windows 98, Windows 2000, Windows XP).

- Step 1: Obtain the software update file **SMRTFD.SRC** and the USB Download application **SFDownloader.exe** from the download section of the ETC Web site: www.etcconnect.com
- Step 6: Connect a USB cable between the SmartFade and the PC. The USB cable must have Type A and Type B connectors.

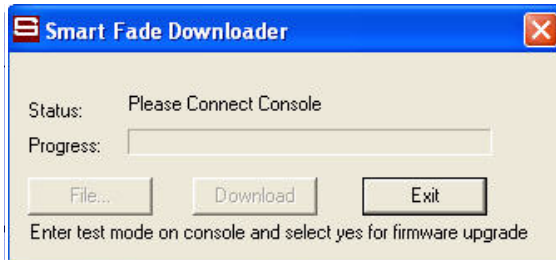
ETC Release Note:

SmartFade v2.0.0 Software



Make sure you have backed up any show data you want to keep to the SD card before proceeding. Show data will be lost and cannot be recovered.

- Step 7: Double-click on the **SFDownloader.exe** application you downloaded from the ETC Web site. You should get this display.



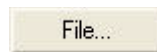
- Step 8: Start the console in test mode. This is done by holding down the **MENU** button and pressing once on **ON**.



The unit will enter self-test mode. Press **MENU** for each of the tests until the memory test has completed. At the end of the memory test the display will prompt:

Firmware Upgrade Are you sure? [No]

- Step 9: Once the connection with the console is recognized, the status information will display the Bootloader Version, and then "Please Load Firmware File". The FILE button will be displayed with solid text.



Click **FILE** and select the **SMRTFD.SRC** file.

- Step 10: Now the DOWNLOAD button will be displayed with a solid text.



Click on **DOWNLOAD** to start downloading. The progress bar will begin to move. When the download is complete, the console will boot into the new updated software.

Issues Corrected in v2.0.0

- 396 SmartSoft: Loading show files with 2496 console online no longer moves all sequences to page 1
- 391 Lost DMX-in buffer was repeated for 2 seconds every 27 minutes
- 387 Stack Seq Edit tab: Dragging item to new position corrupted display
- 386 Edit of Stack Next step now affects results of next GO press
- 384 Language: Recording disable message corrected
- 383 Languages: Corrected translations of 'No more point Qs possible here'
- 382 French: REC MEM to Stack produced corrupted text on LCD
- 338 SD files cache from card read now cleared so that the next different card directory can be read
- 327 Level matching activated during MIDI reception
- 324 DMX output timing corrected, MAB guaranteed to be always greater than 8 microseconds
- 139 Memory card: Load Patch Only option implemented

Known Issues Remaining in v2.0.0

- 411 SmartSoft (preview) & Stack resets Stack pointer to step 1
- 410 Mem Pages tab: Memory erase does not update tab, mem remains on display
- 409 SmartSoft: USB connection lost and not recoverable if PC goes to sleep (auto standby)
Workaround: Either close SmartSoft if leaving the PC to go to sleep or set PC to 'always-on'
- 406 Tap BPM on seq can force seq to stay on until cleared, fader level is overridden.
- 397 Stack Tap Mode timing corrupted for times above 1 minute
- 348 2 Scene mode: 2496 bumps 37-48 can display dim red when upper fader row is active
- 318 Bi-directional crossfader loses sync with position after a GO
- 307 Holding Rate & pressing bumps 21-24 in faders mode channels sets the Tap tempo
- 295 DMX Backup: Bump 1 does not flash when DMX lost in Bumps: Toggle mode
- 294 DMX Backup, not possible to toggle on/off DMX IN
- 293 Patch 1=1; Inds patch to 49 & 50 in 2 scene mode and to 97 & 98 in Normal mode
- 292 2-scene: after self-test/mem erase, x-fader position not checked
- 288 UNDO does not work in DMX Backup Mode
Workaround: Save show to SD card regularly
- 277 Unexpected behavior when Slave/Master STACKS have different numbers of steps
Workaround: Record equal number of cues in the Slave STACK using empty memories
- 269 DMX backup: DMX IN data is not indicated by Bump LED
- 266 Preview Seq shows recorded timing and not actual rate if over-ridden
- 257 Console freezes when writing a show to a full SD card
Workaround: remove SD card, unplug and replug power, after error message the console recovers
- 163 Cannot undo patch changes
Workaround: Mark SD card backup before altering patch
- 126 Patch changes take immediate effect
Workaround: Make SD card backup of show before making patch changes
- 109 Solo doesn't affect stack in DMX backup mode