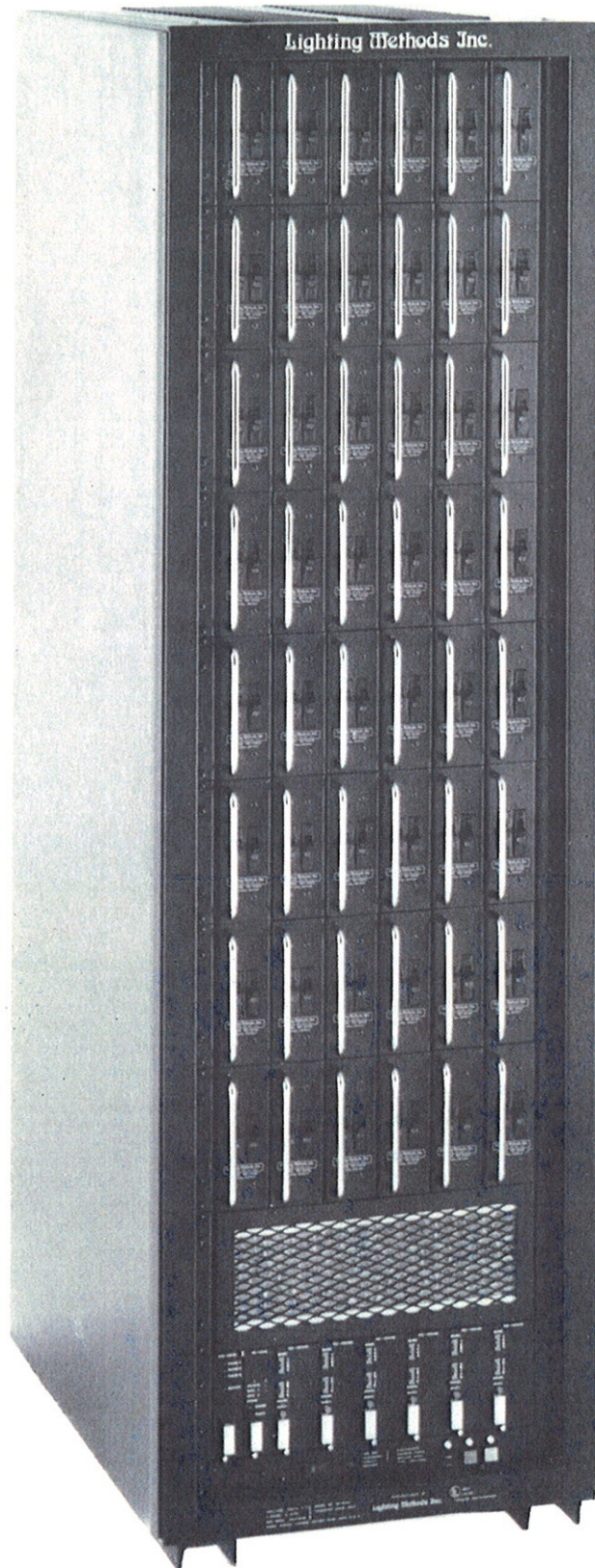


AO Digital Dimming System

- All Steel Construction**
- Completely Factory Wired**
- Compact Freestanding Unit**
- Modular**
- Space for 192-10A, 96-20A or 48-50A Dimmers**
- U.L. Listed**

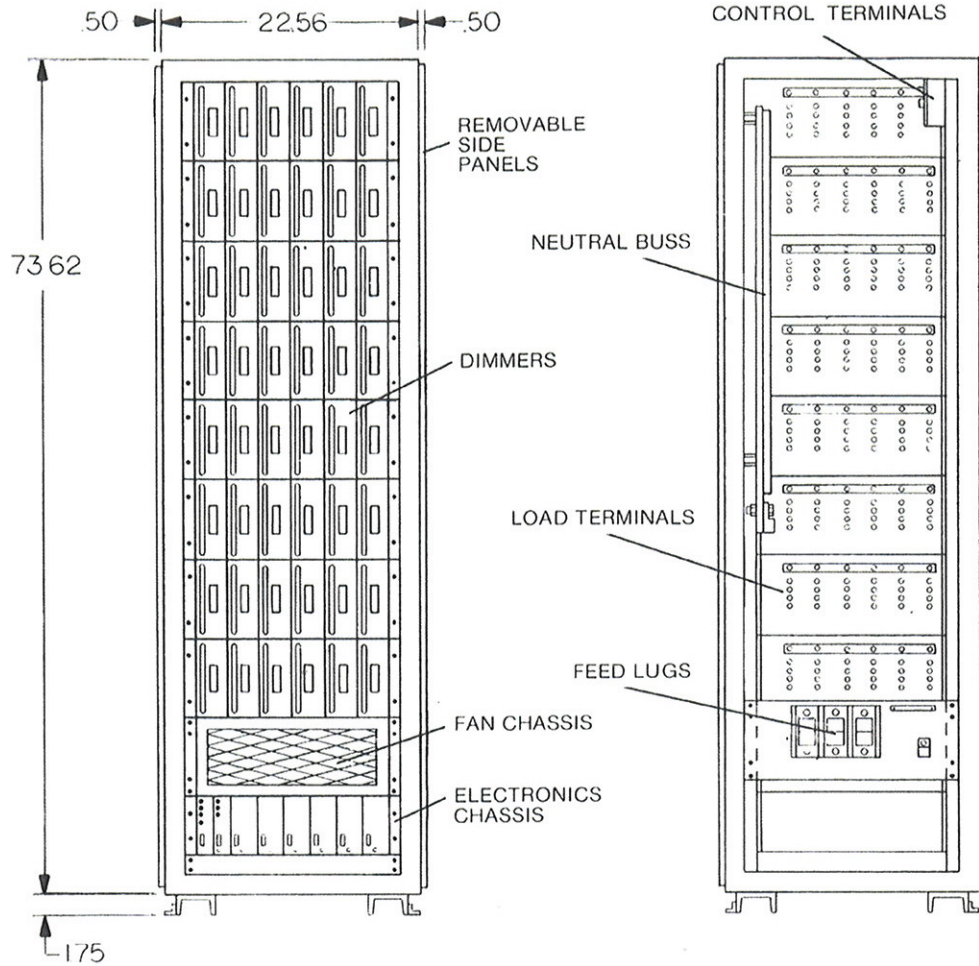


9000 Series Dimmer Racks



**Lighting
Methods Inc.**

PO BOX 1411
ROCHESTER, NY 14603
(716) 546-8710



SPECIFICATIONS

GENERAL: The RD-9000 series dimmer racks are designed to accommodate 8 dimmer chassis containing 192-10A; 96-20A or 48-50A dimmers (48 dimmer modules) and required electronics. Larger systems are assembled by mechanical/electrical connection of two or more racks. Rack systems shall be listed by Underwriters Laboratories Inc.

PHYSICAL: The dimmer rack shall be floor supported, deadfront, substantially framed and enclosed with sheet metal panels. Rack frame shall be welded from 14 ga. roll-formed structural members; 16 ga. panel rail mounting struts and 14 ga. panel mounting angles. Side, top and rear panels shall be cold rolled 16 ga. sheet steel. All rack components shall be properly treated and primed and finished with baked textured enamel. Exterior panels shall be red, frame shall be black. Exterior panels shall be arranged for conduit terminations at the top, bottom and rear of the rack and still allow access for internal wiring.

Single rack frames shall be 75 1/2" high, 31 9/16" deep and 23 9/16" wide.

Racks shall be completely assembled, wired and tested at the factory and require only line, load and control connections at the jobsite. Racks delivered as components or requiring disassembly and reassembly at the jobsite shall not be acceptable for this project.

ELECTRICAL: The dimmer rack shall be designed to operate at 120/208v 60hz AC power with busses sized to a minimum of 800 amps per phase.

All electrical connections to exterior wiring shall be via pressure connect terminals. These terminals shall be UL recognized as field wireable connections. All terminals shall be clearly and permanently marked. Electrical connections to dimmer modules shall be brass pin connectors.

VENTILATION: Forced air ventilation shall be provided via a fan chassis (RD-2420). Fans shall come on when the system is energized. To assist in maintaining an acceptable temperature inside the dimmer rack the owner shall insure that the ambient temperature of the dimmer room does not exceed 40° C. In the event of an overtemp condition the electronics shall shutdown the rack until an acceptable temperature is reached. During any thermal shutdown the fans shall remain on. The fan chassis shall draw air through two filters. Unfiltered forced air ventilation shall not be acceptable.

CONTROL: Dimmer control electronics are contained in the electronics (RD-2030 or RD-2430) and high slope (RD-2432) chassis. Control specifications are listed on the dimmer and control data sheets.